

## AEM10941 mini evaluation board with external DC-DC converter

### Description

The AEM10941DCDC board with external DC-DC converter is a printed circuit board (PCB) featuring all needed components to put in operation the AEM10941DCDC integrated circuit. Please refer to the datasheet for all useful details about the AEM10941DCDC (Document DS\_AEM10941DCDC).

An external DC-DC converter ([TPS62821](#)) connected to the **BATT** pin of the AEM generates 3.3V on the **DC** terminal to supply a load up to 1A in addition to the high-voltage and low voltage-LDOs integrated to the AEM10941DCDC and available respectively at **HVOUT** and **LVOUT** pins.

Please note that a switch is added between the storage element and the DCDC. The DCDC enable pin is controlled by the AEM to keep the storage element protection.

Under quotation, the DCDC converter can be adapted.

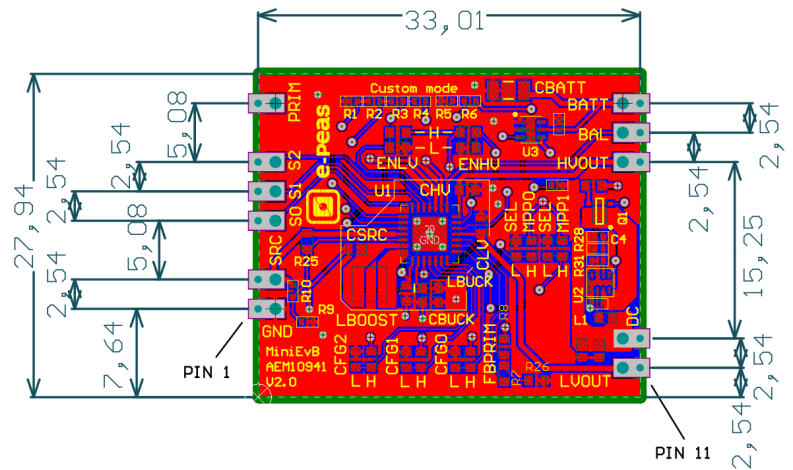
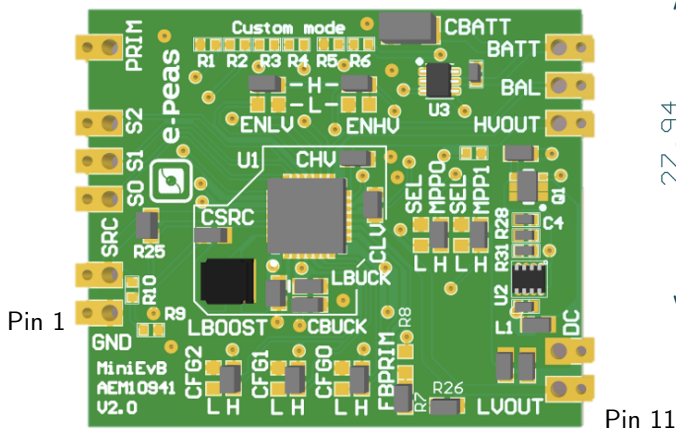
### Device information

Part number	Dimensions
2CAEM10941C0020	27.94 mm x 33.01 mm

### Layout information

Pitch between output vias = 2.54 mm

Output hole diameter = 0.7 mm



### Pinout

PIN	NAME	FUNCTION	PIN	NAME	FUNCTION
1	GND	Ground connection.	7	BATT	Connection to the storage element.
2	SRC	Connection to the harvested energy source.	8	BAL	Connection to the dual-cell supercapacitor.
3	S0	Status[0]. Logic output.	9	HVOUT	Output of the high-voltage LDO regulator.
4	S1	Status[1]. Logic output.	10	DC	Output of the external DC-DC converter.
5	S2	Status[2]. Logic output.	11	LVOUT	Output of the low-voltage LDO regulator.
6	PRIM	Connection to an optional primary battery.			

Table 1: Pins description

Footprint, symbol and 3D Model available.

Please contact [support@e-peas.com](mailto:support@e-peas.com)

Available on order.

Please contact [sales@e-peas.com](mailto:sales@e-peas.com)